



Edge Hill  
University

---

## Introduction

Thank you for your interest in the vacancy for Pro Vice-Chancellor & Dean of Education here at Edge Hill University.

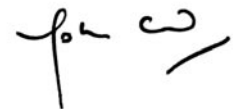
We are seeking to recruit an exceptional academic leader to join our diverse senior leadership team. The right individual will have substantial strategic capability and vision, and a track record in delivering a high quality and customer focussed student experience.

We would expect you to be able to demonstrate the delivery of these attributes in your current role in the Higher Education sector, in particular focussing on creating an environment for outstanding student experience and a compelling and achievable vision for the future of the Faculty of Education.

Edge Hill University is based on an attractive, award-winning 160-acre campus in Lancashire, close to Liverpool and Manchester and is ranked as Gold in the Teaching Excellence Framework (TEF). If you want to be part of a successful and exciting University, to really add value to what we do and to be a major contributor to the progress of the University in the future then this could be the role for you.

If you wish to discuss this opportunity further then you can contact me by email on [john.cater@edgehill.ac.uk](mailto:john.cater@edgehill.ac.uk).

With best wishes,



John Cater  
Vice-Chancellor  
Edge Hill University



Edge Hill University



## About the University

---

Edge Hill University is based on an attractive, award-winning 160-acre campus in Lancashire, close to Liverpool and Manchester. The institution has been providing higher education for more than 130 years, with a mission to create opportunity from knowledge. The University is an academic community comprising more than 11,000 full time undergraduate and postgraduate students and a further 3,200 on part time programmes.

Edge Hill is ranked as **Gold** in the **Teaching Excellence Framework (TEF)**, the government's evaluation of excellence in teaching quality, learning environment and student outcomes. Gold is the highest possible TEF rating, indicating that the institution is 'of the highest quality found in the UK' and is 'delivering consistently outstanding teaching, learning and outcomes for its students.' The specific findings for Edge Hill University indicate that 'students from diverse backgrounds achieve consistently outstanding outcomes', and that 'very high proportions of students continue with their studies and progress to employment or further study.'

Edge Hill is one of the select few universities to have held the coveted UK **University of the Year** title, awarded by *Times Higher Education* (2014/15). It also has been named **University of the Year for Student Retention** by *The Times* and *The Sunday Times Good University Guide 2018*, who wrote that it is 'firmly establishing itself among the top post-1992 universities.' In 2018 Edge Hill University was acknowledged as one of the world's finest teaching institutions, winning a **Global Teaching Excellence Spotlight Award** in recognition of 'the quality of support and engagement infrastructure for students.'

The University's student accommodation has been voted **best student accommodation in the UK and Ireland** and **best value for money** (National Student Housing Awards 2018).

Our strengths in **employability** are demonstrated by 97.3 per cent of our graduates finding work or further study within six months of graduating (HESA figure for 'all leavers'), and reinforced by awards including a top ten shortlisting in the **National Graduate Recruitment Awards** (TARGETjobs 2018).

Times Higher Awards have recognised our **Excellence and Innovation in the Arts** (Highly Commended, 2015) and **research** in sport and education, working in partnership with Everton in the Community the official charity of Everton Football Club (**Outstanding Contribution to the Community**, 2016).

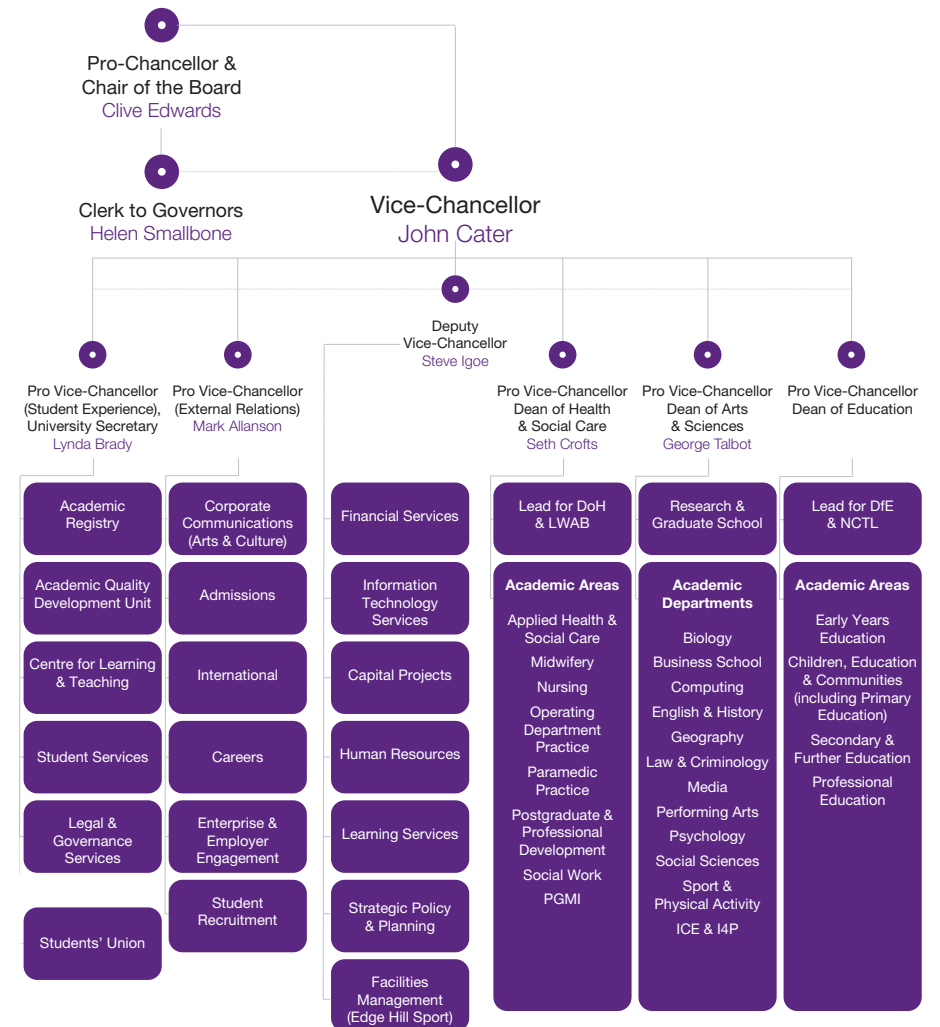
Edge Hill University will offer an access to medicine course from 2019 and train doctors from 2020, following the announcement by the Secretary of State for Health to establish a Medical School at the University.



About the University



## University Organisation chart





## Award-Winning Workplace

Edge Hill University has 3,647 staff working across three Faculties and a range of professional support services. Most staff are based on our 160-acre campus in Ormskirk with others based in Manchester and the US.

The University has been ranked **Best University Workplace** (*Times Higher Education* 2015), judged **Best UK Employer** (European Business Awards 2016) and Highly Commended for **Workplace of the Year** in *Times Higher Education* Leadership and Management Awards 2017. Edge Hill was awarded an Athena SWAN Institutional Bronze Award on 1st October 2015.

*“Edge Hill University is an environment in which you can flourish and achieve your full potential. Our award-winning Ormskirk campus is an excellent place to work, and colleagues receive competitive salaries, with high quality pension provision and excellent holidays alongside a wide range of staff social and well-being benefits”* – John Cater, Vice-Chancellor





## Region

---

Located in the heart of the North West, Edge Hill University is situated close to the thriving market town of Ormskirk and the vibrant cities of Liverpool and Manchester.

The seaside resort of Southport is nearby and the University is only a short distance from stunning areas of unspoilt natural beauty, such as the sand dunes and pinewoods of Formby.

Described as 'the best place in England to bring up a family' (by *The Telegraph*, reporting on The Family Friendliness Index), the region has excellent schools, nurseries and green spaces.



Region




## Faculty of Education

---

Edge Hill University's Faculty of Education has a well-established reputation for the high quality of its diverse range of academic programmes. The extensive initial teacher training portfolio covers the full range of age phases, delivered through strong and collaborative partnerships with schools and colleges and across the entire range of educational settings. As a key provider of professional development, the University is equally committed to supporting and developing the entire children's workforce in a range of settings, from early years onwards.

As a contributor to the University's TEF Gold status, the Faculty recognises the importance of outstanding learning and teaching and sector-leading support, enabling all students to fulfil their potential. Whilst this remains the single most important priority, the University was also the most improved performer nationally in the 2014 Research Excellence Framework, and the Faculty has a key role in sustaining and improving that performance in the 2021 iteration. The Faculty has considerable capacity, not all of which has been realised, in applied research and knowledge.

Our vision is to produce graduates who are capable and reflective practitioners who are intellectually engaged, skilled in their role and committed to those they educate and support. If you share and can articulate this vision we look forward to receiving your application.



Faculty of Education

## Facts and Figures

### Key Performance Indicators

Year Ending 31 July	2018	2017	2016	2015	2014
Total income in £'000 (1)	126,231	127,365	128,127	123,935	115,376
Surplus for re-investment in £'000 (1)	13,985	20,254	21,637	21,247	17,899
Cash generated by activities in £'000	24,931	31,711	31,699	30,165	22,760
Cash for investment £'000	45,177	49,803	38,073	29,029	21,127
Financial worth of the University in £'000 (1)	228,655	194,749	171,240	162,796	147,316
Applications for University FT UG programmes (2)	16,125	18,035	19,767	19,133	18,931
Total number of students of the University (3)	14,256	15,220	15,543	16,170	16,750
Percentage of staff who rate the University as a good or excellent employer (4)	91%	N/A	93%	94%	92%
Employee turnover	6.7%	6.8%	6.6%	5.6%	6.9%
Level of University staff absence	3.1%	2.9%	3.6%	3.2%	3.4%

(1) Total income and surplus for the year based on the 2015 SORP

(2) Based on UCAS statistics

(3) Based on HESA Student Record

(4) The University's independently scrutinised Staff Survey is undertaken bi-annually with effect from 2016. The most recent survey took place in July 2018.



---

Edge Hill University  
St Helens Road  
Ormskirk  
Lancashire  
L39 4QP  
United Kingdom



[edgehill.ac.uk](http://edgehill.ac.uk)



[facebook.com/edgehilluniversity](https://facebook.com/edgehilluniversity)



[twitter.com/edgehill](https://twitter.com/edgehill)



[instagram.com/edgehilluniversity](https://instagram.com/edgehilluniversity)

---